

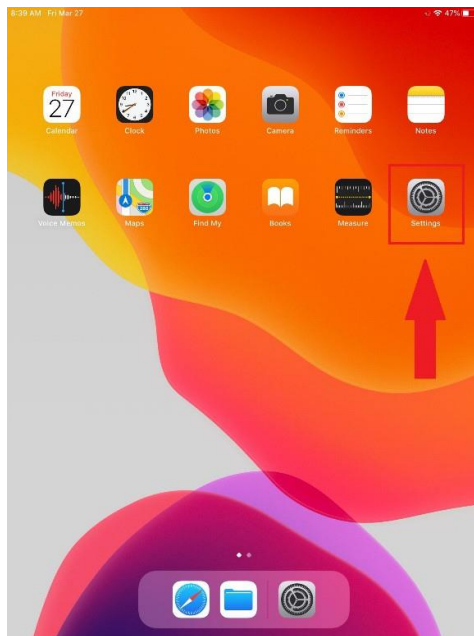
# Using an iPad at Home: How to Connect to Internet

All students **MUST** connect through the GlobalProtect VPN app in order to be able to access the internet from the iPad at home.

There is a one-time initial setup outlined in the following instructions. If you have already connected the iPad to your home Wi-Fi (or hotspot), you can skip to Part 2: Setup Initial VPN Connection on page 3. Once you've completed the initial setup, you can skip to Part 3: How to Connect after Initial Setup is Completed on page 5 to quickly connect to the VPN for internet access.

## Part 1: How to Connect to Home Wi-Fi (or Hotspot)

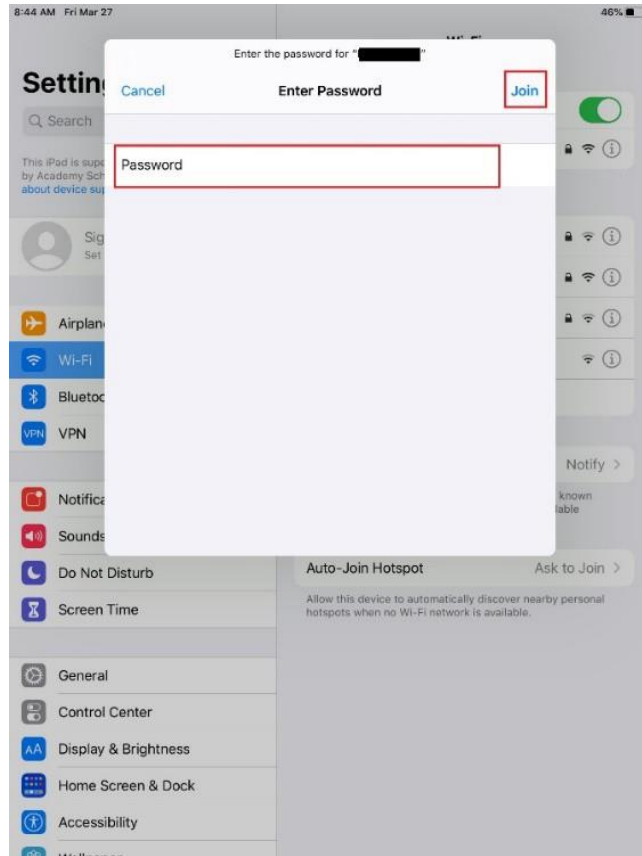
1. Open Settings:



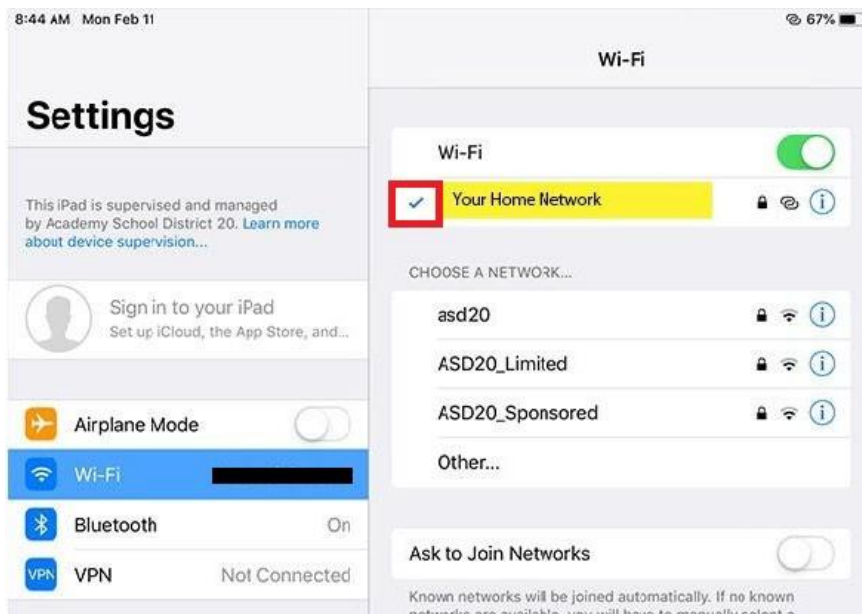
2. Make sure **Wi-Fi** is selected in the left pane and select your wireless network name in the right pane under **Networks**:



3. Enter the password to your wireless network and click **Join**:

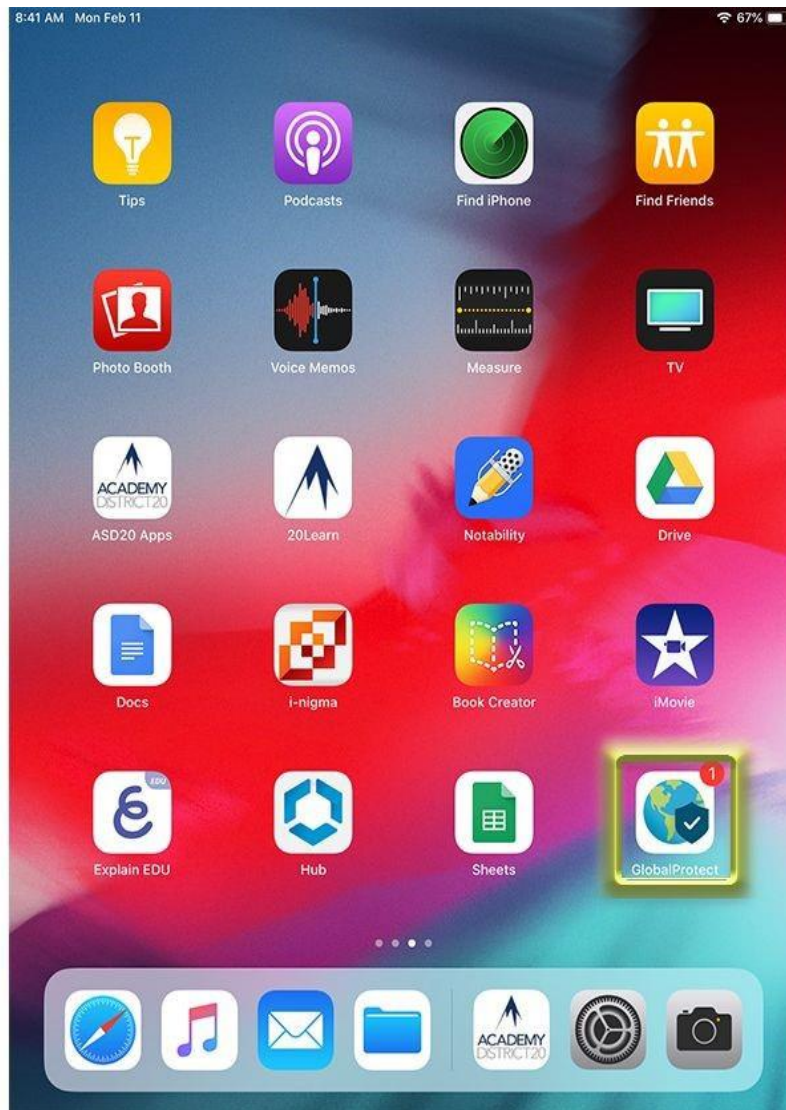


4. There should now be a blue checkmark next to your Wi-Fi network:

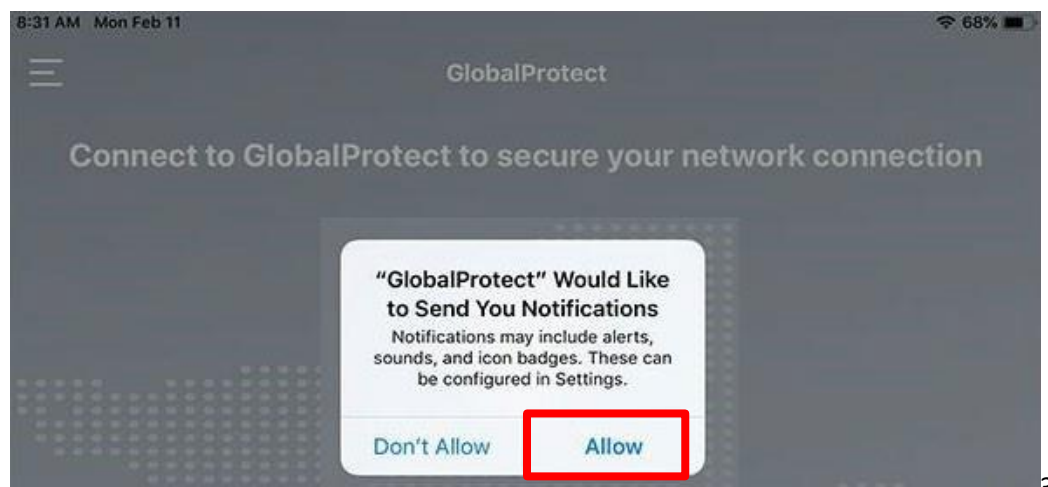


## Part 2: Setup Initial VPN Connection

1. Open the **Global Protect** VPN App.



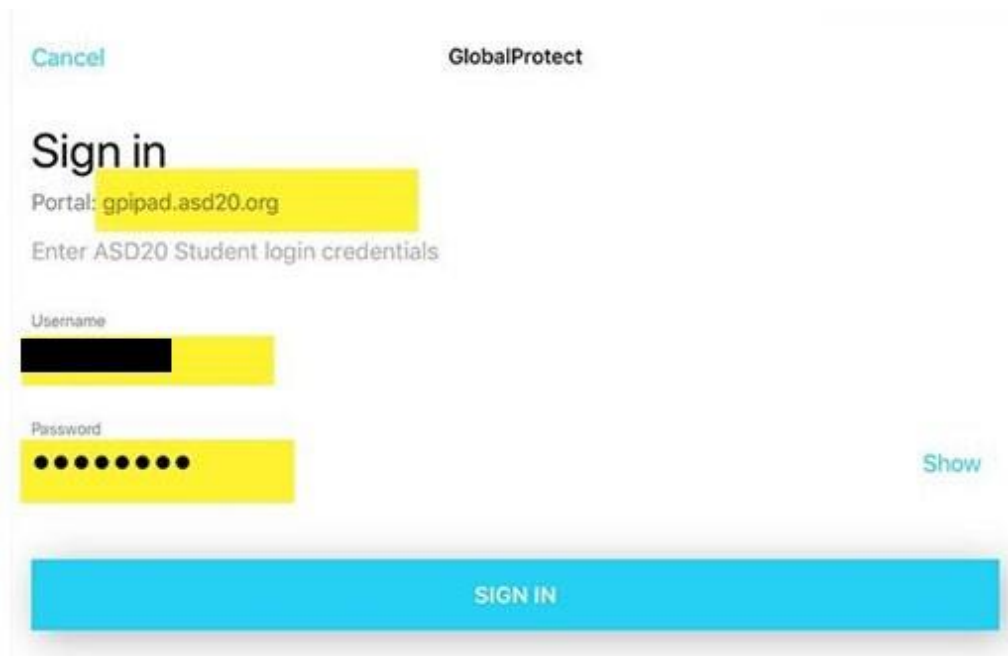
2. If prompted, select **Allow Notifications**:



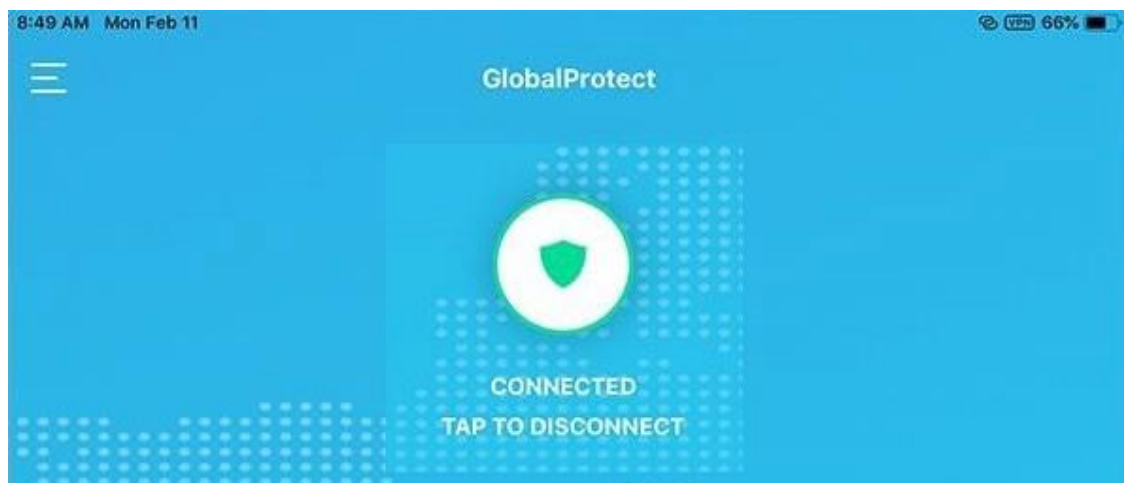
3. Select **Tap to Connect**:



4. You should see [gpipad.asd20.org](http://gpipad.asd20.org) as the Portal. Enter your student's **6-digit student ID#** for **Username** followed by their district password and click **Sign In**:



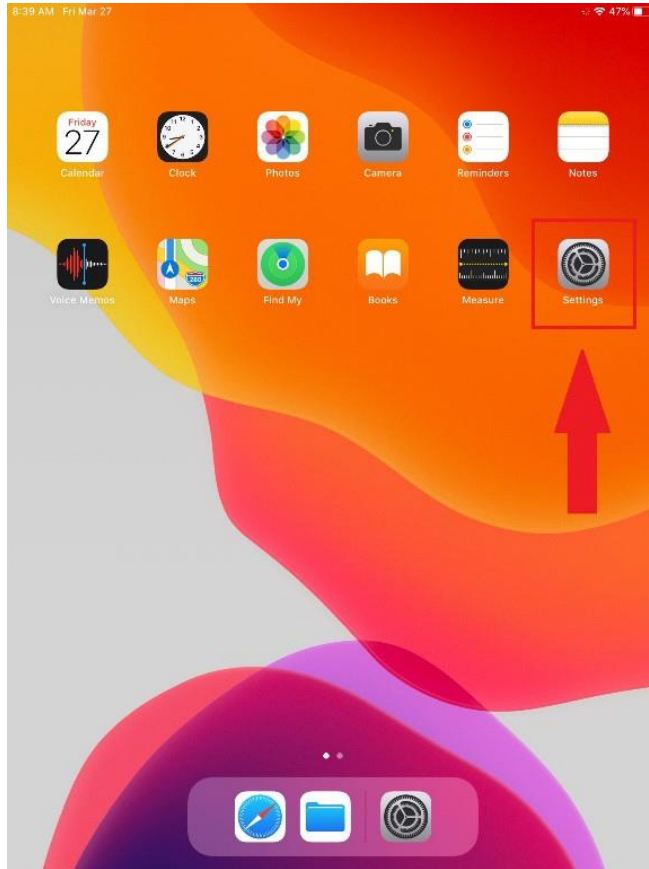
5. If done correctly it should now say connected, and you should be able to access the internet on the iPad



## Part 3: How to Connect after Initial Setup is Completed

After completing the one-time setup, you will now be able to quickly turn on the VPN by following these steps:

### 1. Open Settings



### 2. Open VPN in the left pane and toggle the VPN so the status shows Connected and is green:

